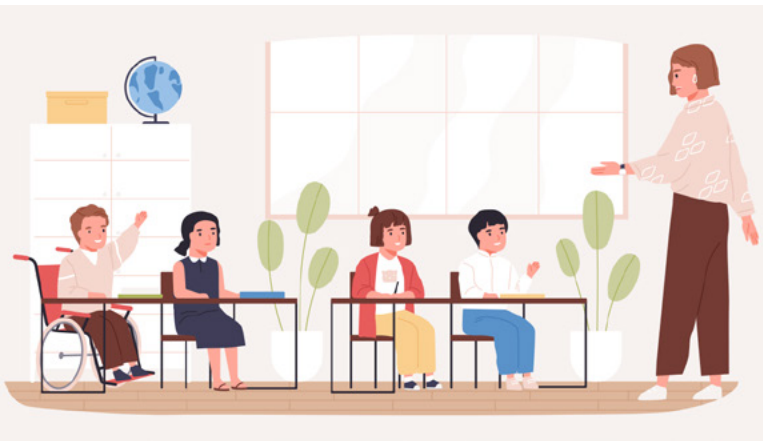


**Swansfield Park**  
Primary School



# Access Policy Statement

The school recognises that many of its students, visitors and staff, whether disabled or otherwise, have individual needs when using school and facilities. However, we also recognise that for some students, the nature of their disabilities may mean that they experience specific difficulties related to accessing education, and the physical environment. As part of the ongoing commitment to the delivery of an inclusive educational service, we will endeavour to ensure that disabled students receive the same standards of education as non disabled students.

### **In the light of this the school will:**

- Inform all staff that our policy for the provision of educational services ensures the inclusion of disabled students. Such communications will address the legal obligation of staff, and the school.
- Provide appropriate disability awareness training for staff, which will explain the school policy towards disabled students and the effective implementation and monitoring of it.
- Address acts of disability discrimination via existing conduct codes, where appropriate.
- Encourage suppliers and contractors, to adopt similar policies towards disabled students.

### **In order to ensure that the educational services it provides effectively meet the needs of disabled students the school will:**

- Consult with disabled pupils, parents, staff and disability organisations.
- Plan to make access improvements to enable disabled people to use its services. Furthermore, the school will effectively communicate their availability to both pupils and staff.
- Regularly review whether its education (and other) services are both accessible and effective, and take appropriate action.
- Monitor the implementation and effectiveness of this policy on a regular basis.
- Operate an accessible complaints procedure whereby disabled people can make improvement suggestions and request assistance.
- Monitor the implementation and effectiveness of this policy on a regular basis.
- Operate an accessible complaints procedure whereby disabled people can make improvement suggestions and request assistance.


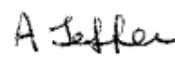



This policy has been formally adopted by the governing body.

### VERSION HISTORY

VERSION	DATE	DESCRIPTION
Initially adopted	19 September 2014	Adapted into Swansfield Park First School
Review	2 July 2015	
Review	31 August 2016	Adapted into Swansfield Park Primary School
Review	30 September 2018	
Update	27 December 2019	Minor date change
Update	June 2021	Date change
This Review	September 2023	Date change

### APPROVAL AND AUTHORISATION

	NAME	JOB TITLE	SIGNATURE	DATE
Approved	<b>Anne-Marie Grimes</b>	Head Teacher		September 23
Approved	<b>Angela Jefferies</b>	Chair of Governors		September 23
	DATE OF NEXT REVIEW		<b>AUTUMN 2024</b>	

[www.swansfield.northumberland.sch.uk](http://www.swansfield.northumberland.sch.uk)



The Avenue, Alnwick NE66 1UL



01665 602267



admin@swansfield.northumberland.sch.uk

